



Community TV over ip

John Defoe
Richard Overton



The challenge

- To engage communities
- To engage individuals
- To empower the disadvantaged
- To provide access to on-line services



The response

- RegenTV in Newham – the original PC on TV
- Shoreditch Digital Bridge
- Other initiatives ?



RegenTV – what is it?


- A technology
 - Broadband content delivered to the TV
- A community engagement tool

Together:

- A means of bridging the digital divide



RegenTV – the technology

- ipTV – the concept 
- The delivery mechanism

BUT WHY?



RegenTV – why ipTV?

- Technophobia

BUT

- 85% of jobs need ICT skills
- Growth in Internet shopping
- The Shopping Divide

SO

- Familiar, ubiquitous interface – the TV 



RegenTV – Delivery mechanisms

- Computer cabling } Available now
- IRS coax } Available now
- Wireless – Wifi, WiMax } Possible
- ADSL/ ADSL2 } Possible



RegenTV – Community Engagement

- Meet the Neighbours
- Community TV Channel – VOD
- Used for MasterPlanning process
- Community Engagement Manual produced
- Community spirit
 - 'Meet' each other
 - Appreciate each other
 - Work together



RegenTV – where is it & what's the history?

- Carpenters Estate in Stratford
- Overlooking Olympics site
- DfES WUC funded in 2000: launched 2002
- ODPM funded in 2004

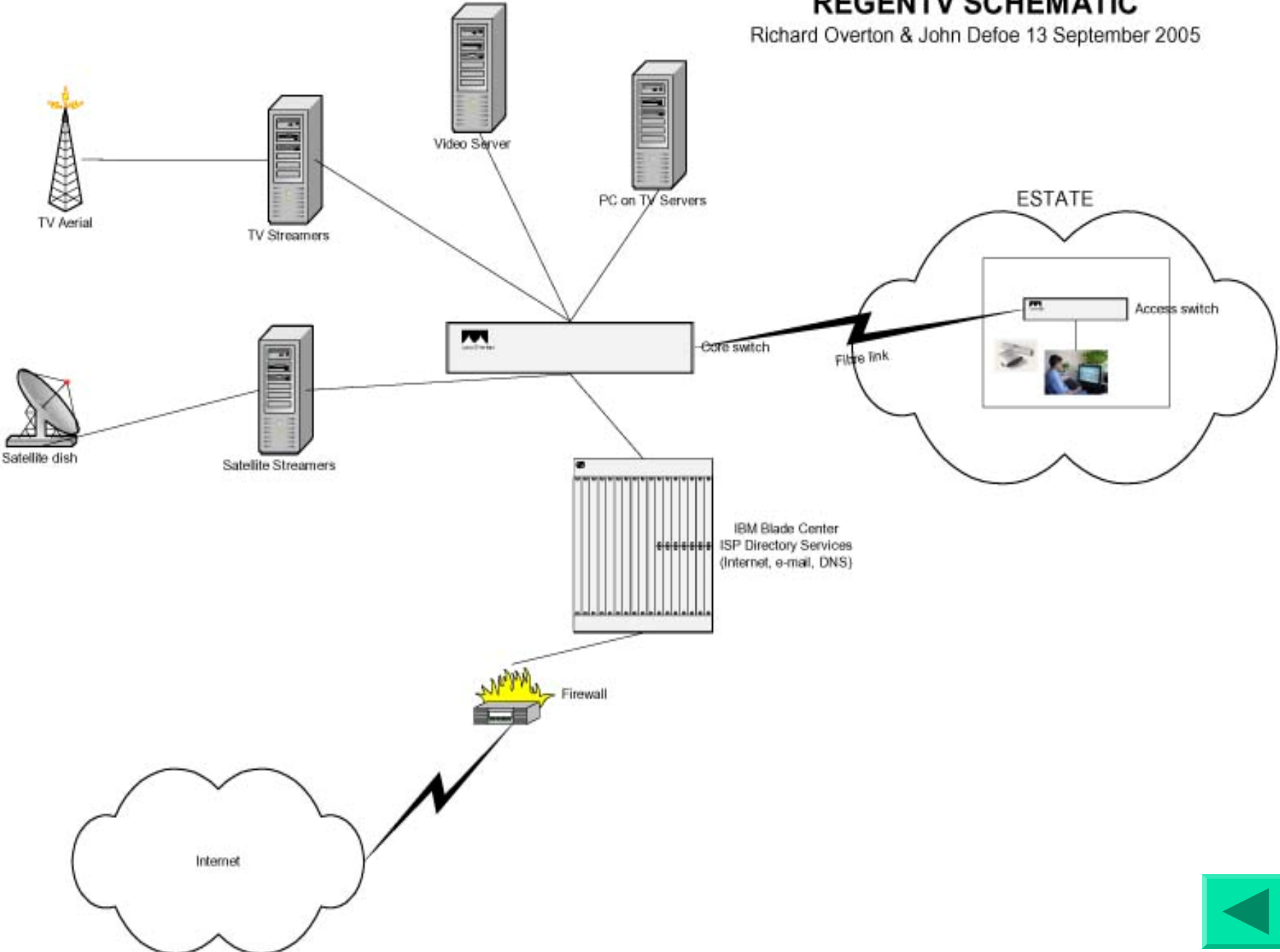


Community ip TV - discussion

- OK – that's RegenTV – what else?
- Other broadband VOD TV providers – BT/Microsoft, Homechoice – how do we introduce the community element?

REGENTV SCHEMATIC

Richard Overton & John Defoe 13 September 2005



[1 Guide and Help](#)

[2 Digital TV](#)

[3 Satellite TV](#)

[4 Videos](#)

[5 My Computer](#)

[6 Estate Website](#)

[7 Internet](#)

[8 Email](#)

[9 East Thames Website](#)



Choose this option to see a guide on how to use the service. If you need more help, contact the help desk at 3 Nightingale Court or on 07833 644166.

